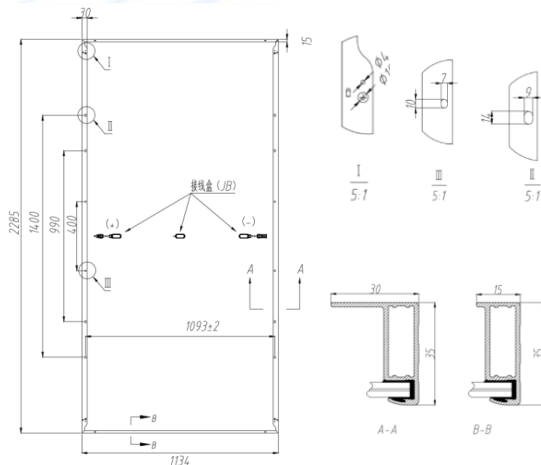




## Mechanical Specifications @STC

Solar Cells:	Mono
Number of Cells:	144pcs
Module:	2279×1134×35mm
Weight:	32.8 kg±3%
Snow/Wind Load:	5400/2400 Pa
Thickness of Glass:	dual 2.0mm
Junction Box:	IP68, 3 Diodes
Connector:	HTC-16, IP68
Length:	(+)290mm /(-)290mm(including connector)



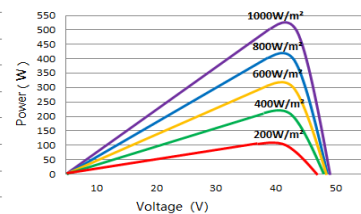
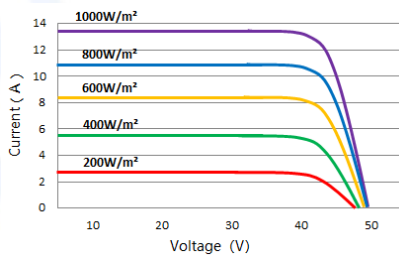
## Electrical Specifications @STC

Pmax (W) 0~+5W	Umpp (V)	Impp(A)	Uoc (V) ±3%	Isc(A) ±3%	Module Efficiency	Max System Voltage	Max Series Fuse	Bifacial Gain 5% (W)	Bifacial Gain 15% (W)	Bifacial Gain 25% (W)
525	40.54	12.96	49.04	13.40	20.31%	1500V	25A	551	604	656
530	40.69	13.03	49.19	13.47	20.51%	1500V	25A	557	610	663
535	40.84	13.11	49.36	13.55	20.70%	1500V	25A	562	615	669
540	41.03	13.17	49.47	13.64	20.89%	1500V	25A	567	621	675
545	41.16	13.25	49.61	13.72	21.09%	1500V	25A	572	627	681
550	41.29	13.33	49.72	13.81	21.28%	1500V	25A	578	633	688

## Temperature Parameter

Temperature Cycling Range:	-40°C ~ +85°C
Norminal Module Operating Temperature:	45±2 °C
Temperature Coefficient of Isc:	0.028%/°C
Temperature Coefficient of Voc :	-0.302 %/°C
Temperature Coefficient of Pmax :	-0.414%/°C

## I-V Curve LSDMH144-540W



## Packaging Configuration

Modules Per Pallet:	31pcs
Modules Per 40' HQ:	620pcs

## Guarantee

12-year warranty on materials & workmanship
30-year linear power output warranty